

Government Structure

Support Services

Supervisor

Collin W. Walls (248) 634-3111

Clerk

Nancy Strole (248) 634-3111

2006 Tax Rates

School District	Homestead	Non Homestead
Brandon	\$28.34	\$46.29
Clarkston	\$27.10	\$45.10
Holly	\$27.10	\$45.10

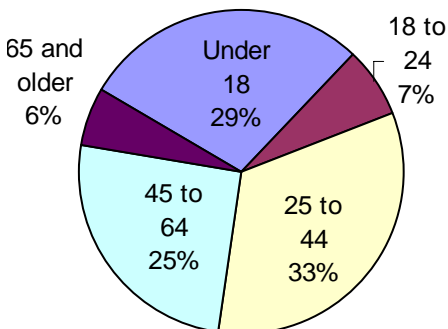
Source: www.oakgov.com /equal; rates per \$1000 State Equalized Value and published in December of each tax year

Private Schools / Colleges

Private Schools

Cedar Crest Schools, Springfield Christian Academy

Population by Age



O
A
K
L
A
N
D
C
O
U
N
T
Y
P
L
A
N
N
I
N
G
A
N
D
E
C
O
N
O
M
I
C
D
E
V
E
L
O
P
M
E
N
T

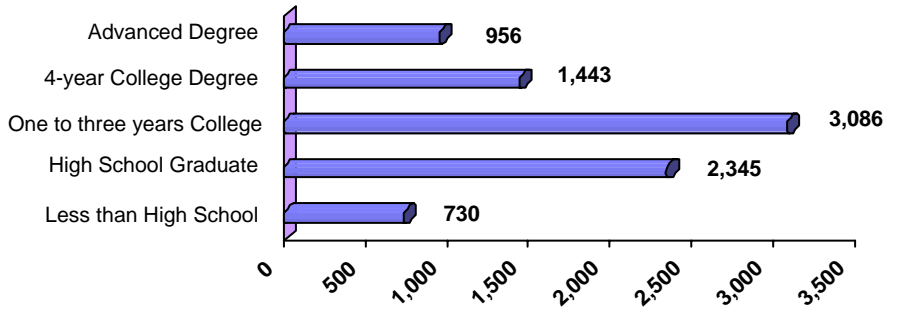
Few communities can boast the recreational opportunities or scenic open spaces that exist in the Township of Springfield. Its population is focused when it comes to recognizing and enjoying the natural resources of the area while being supportive of government policies which have woven into them issues concerning conservation and preservation. Quality housing is nestled amongst the hills and trees and along the lakeshores. The township has acreage for horse farms. Lovely tree-lined dirt roads wind through the countryside. To add to a sense of place set back in time, the little hamlet of Davisburg - four corners within Springfield - has added just two buildings since 1900. Here are the Township Hall, post office, a candle factory, a real estate office, grocery and a steepled white-clapboard church. Centrally located just 20 minutes from either Flint or Pontiac, the two I-75 interchanges provide easy access from Springfield to the major population and industrial centers of Michigan.

Public School Enrollment

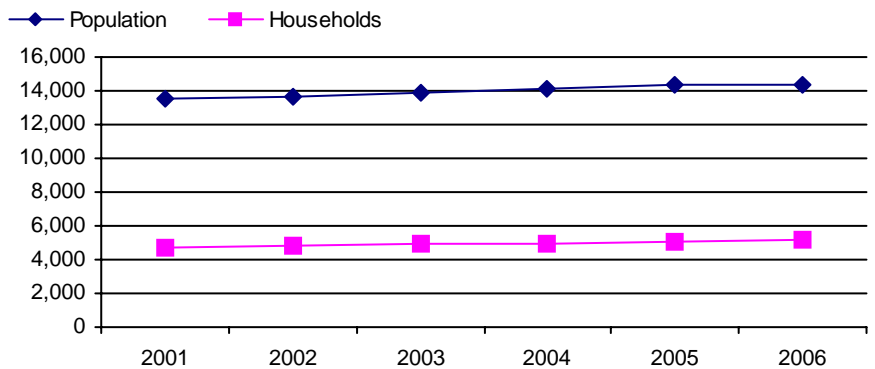
Does not include public school academies

Community	School District	Year	Enrollment
Springfield Twp	Brandon	2006	3707
Springfield Twp	Clarkston	2006	8134
Springfield Twp	Holly	2006	4210

Educational Attainment of People Over 25 Years of Age



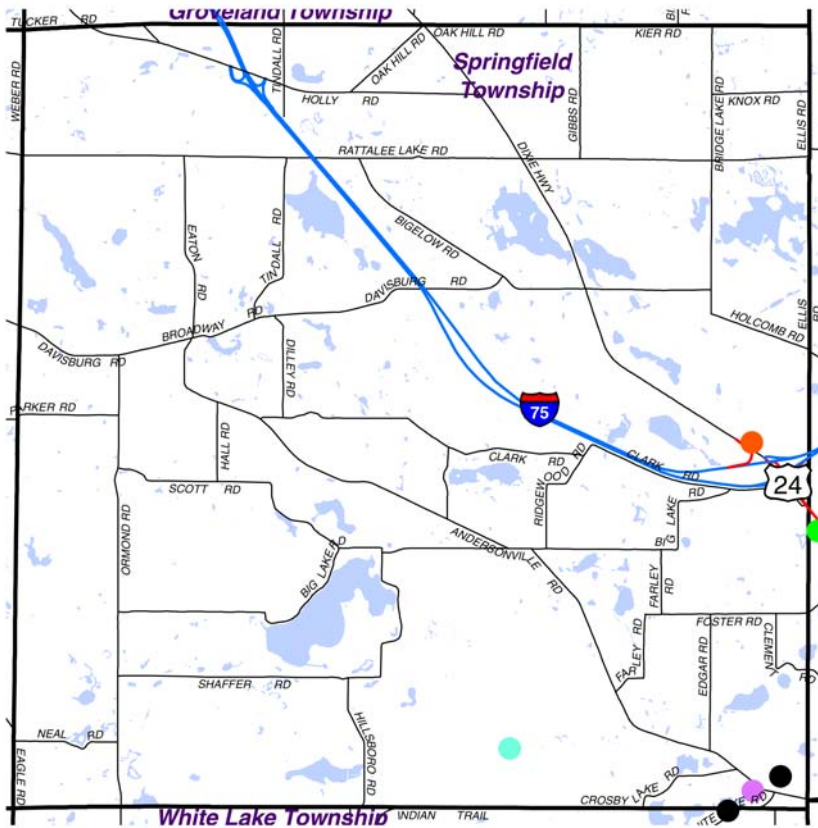
Population and Household Growth



Source: SEMCOG

Local New Development Activity

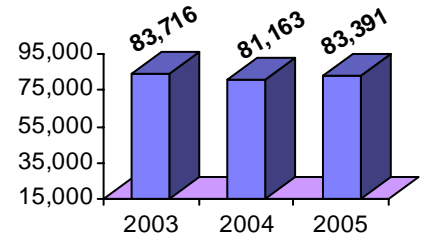
Quality of Life



- Mixed-Use
- Office Bldg.
- Trans./Utility
- Medical Facility
- Institutional Facility
- Retail/Commercial Bldg.
- Residential/Commercial
- Leisure Activity/Accommodations
- Industrial/Warehouse/Hi-Tech

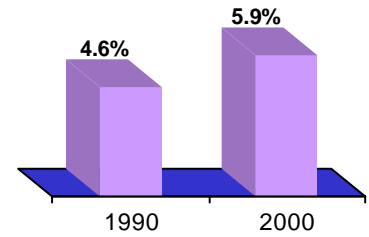
OAKLAND COUNTY PLANNING AND ECONOMIC DEVELOPMENT

Median Household Income

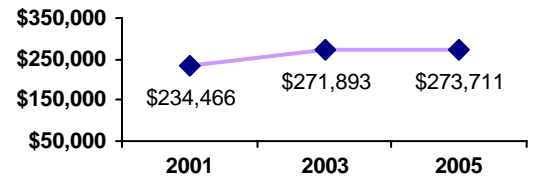


Source: Claritas

Poverty as a percent of Total Population



Average Housing Costs



Values based on number of homes sold
Source: O.C. Equalization

Top Employers

Rank	CompanyName	Industry
1	Clarkston School District	Primary education
2	New Hrzons Rehabilitation Svcs	Job training and related services
3	Colombiere Center	Religious school
4	Holly School District	Primary education
5	Shepard's Hollow Golf Course	Public golf courses
6	Bordine Nursery Ltd	Ornamental nursery products
7	Clawson Container Company	Tanks, storage
8	Midwest Illumination Inc	Energy conservation consultant
9	Randy Hosler Pontiac, Inc	New and used car dealers
10	Szott Ford	New and used car dealers

Manufactured Housing

Year	# of Parks	# of Units
2000	2	624
2003	2	624
2005	2	624

Source: SEMCOG

For more information contact:
Daniel P. Hunter, Manager
 Oakland County Planning and Economic
 Development Services
 1200 North Telegraph Road, Dept. 412
 Pontiac, Michigan 48341
www.oakgov.com
 ph: 248 858 0720 fax: 248 975 9555